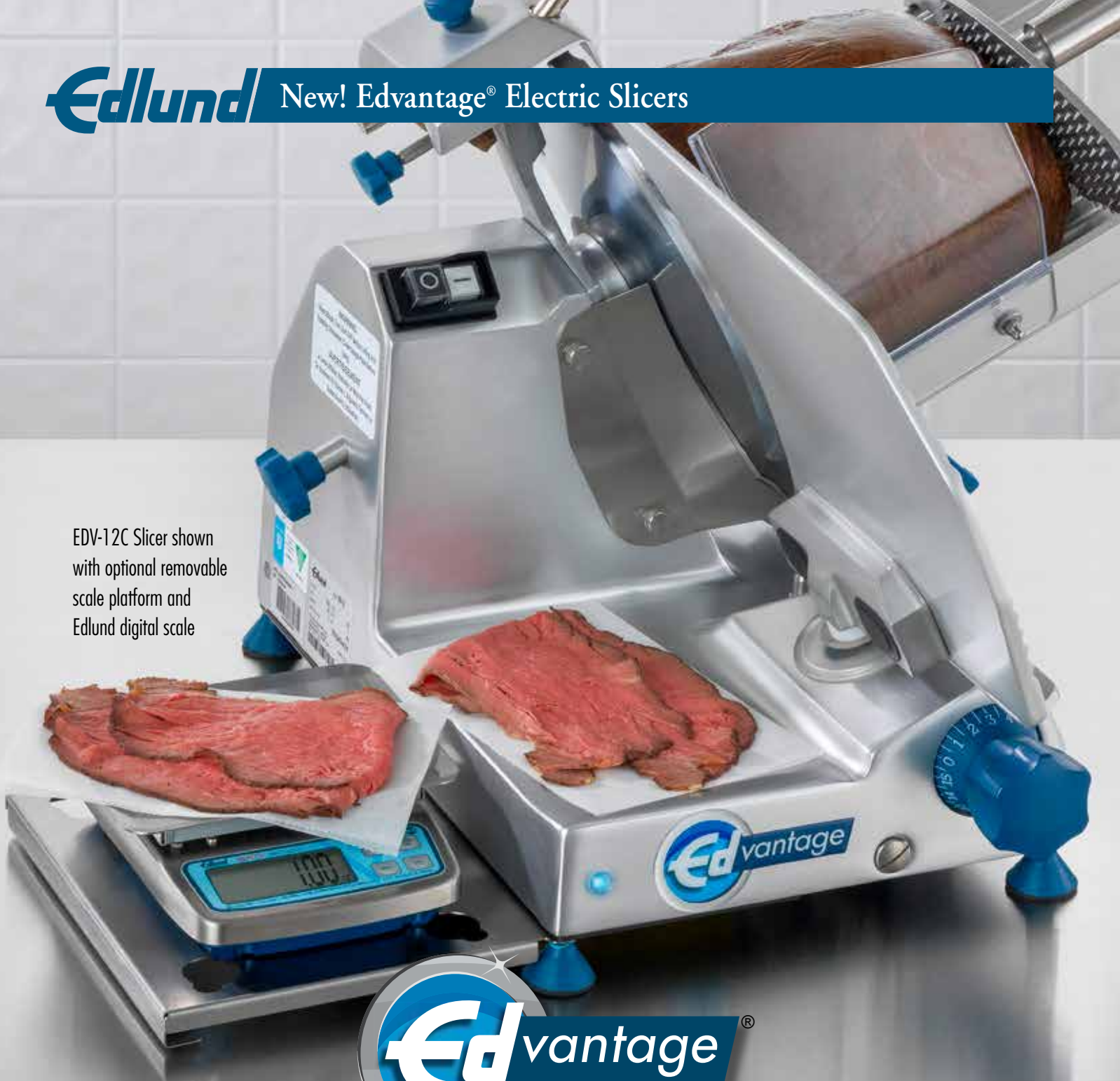


# E<sup>d</sup>lund New! Edvantage<sup>®</sup> Electric Slicers

EDV-12C Slicer shown with optional removable scale platform and Edlund digital scale



EDV-10C  
10" Compact



EDV-12C  
12" Compact



EDV-12  
12" Medium Duty



Edlund proudly introduces our new Edvantage® meat slicers, with all the performance, safety, and sanitation features you're looking for, but missing in other slicers. More powerful motors for easier slicing of meats and cheeses, more switches and covers to protect operators during use, and easily removable components to making cleaning faster and safer. Whether you need just a compact 10" slicer or require the power and performance of a 12" model with a full 1/2 HP motor, you can now take Edvantage® of these new models from Edlund, the new, sharper choice in slicing!



- Built-in sharpener with 2 sharpening stones



- Special Blade removal tool included

- Removable carriage with interlocking thickness gauge with zero blade exposure for safe, easy cleaning

- Blade cover safety micro switch



- Sealed housing prevents moisture damage

- Compact models have full 1/3 HP Motor,
- 12" Medium Duty model has full 1/2 HP Motor

- Polished anodized aluminum and stainless-steel construction



- Optional scale tray attachment accepts multiple Edlund scales







# The clear advantage in slicer safety, productivity, and cleanability!



- Blade cover release knob with safety micro switch



- Switches mounted on top to reduce failures



- Wide gap between blade and housing for more thorough cleaning



- Heavy-duty stainless-steel product pusher rod



- Bright blue light indicates when slicer is running



- Tritan™ clear hand guard standard on all models



- Dual ergonomic handles for easier slicing



- Removable stainless-steel slice deflector



### EDV-10C 10" Compact

- Anodized cast aluminum and stainless construction
- Top mounted switches reduce failures
- Full 1/3 HP ventilated motor
- Belt drive motor
- Tritan™ clear hand guard standard
- Built-in dual stone sharpener
- Forged, hardened 10" blade
- Special blade removal tool included
- Safety micro switch when blade guard is removed
- Removable carriage for easy cleaning
- Interlocking thickness gauge with zero blade exposure when carriage is removed
- Heavy-duty SS Product Pusher Rod
- Removable stainless-steel slice deflector
- Sealed Housing prevents moisture damage
- Dual ergonomic handles for easy slicing
- Bright blue light on front indicates slicer is running
- Safety overload switch on bottom
- Optional P488 attachable scale platform available
- Exclusive Edvantage warranty



### EDV-12C 12" Compact

- Anodized cast aluminum and stainless construction
- Top mounted switches reduce failures
- Full 1/3 HP ventilated motor
- Belt drive motor
- Tritan™ clear hand guard standard
- Built-in dual stone sharpener
- Forged, hardened 12" blade
- Special blade removal tool included
- Safety micro switch when blade guard is removed
- Removable carriage for easy cleaning
- Interlocking thickness gauge with zero blade exposure when carriage is removed
- Heavy-duty SS Product Pusher Rod
- Removable stainless-steel slice deflector
- Sealed Housing prevents moisture damage
- Dual ergonomic handles for easy slicing
- Bright blue light on front indicates slicer is running
- Safety overload switch on bottom
- Optional P488 attachable scale platform available
- Exclusive Edvantage warranty



### EDV-12 12" Medium Duty

- Anodized cast aluminum and stainless construction
- Top mounted switches reduce failures
- Full 1/2 HP ventilated motor
- Belt drive motor
- Tritan™ clear hand guard standard
- Built-in dual stone sharpener
- Forged, hardened 12" blade
- Special blade removal tool included
- Safety micro switch when blade guard is removed
- Removable carriage for easy cleaning
- Interlocking thickness gauge with zero blade exposure when carriage is removed
- Heavy-duty SS Product Pusher Rod
- Removable stainless-steel slice deflector
- Sealed Housing prevents moisture damage
- Dual ergonomic handles for easy slicing
- Bright blue light on front indicates slicer is running
- Safety overload switch on bottom
- Optional P488 attachable scale platform available
- Exclusive Edvantage warranty

#### SPECIFICATIONS:

| MODEL # | DESCRIPTION                | PRODUCT CODE | MASTER CASE | CASE CUBE FT <sup>3</sup> /M <sup>3</sup> | CASE WEIGHT LBS./KG |
|---------|----------------------------|--------------|-------------|---|---------------------|
| EDV-10C | 10" COMPACT SLICER         | 31100        | 1           | 5.80/0.17                                 | 43/19.35            |
| EDV-12C | 12" COMPACT SLICER         | 31200        | 1           | 6.22/0.18                                 | 48/21.60            |
| EDV-12  | 12" MEDIUM DUTY SLICER     | 31300        | 1           | 8.49/0.25                                 | 54/24.30            |
|         | EDV-10C/12C SCALE PLATFORM | P488         |             |   |                     |
|         | EDV-12 SCALE PLATFORM      | P489         |             |   |                     |

**WARRANTY INFORMATION:** THE EDLUND COMPANY WARRANTS THESE PRODUCTS TO BE FREE FROM DEFECTS IN MATERIAL AND WORKMANSHIP FOR A PERIOD OF ONE YEAR FROM DATE OF PURCHASE. THE COMPANY'S OBLIGATION UNDER THIS WARRANTY IS LIMITED TO REPAIRING OR REPLACING WITHOUT CHARGE ANY PART OR PARTS FOUND TO BE DEFECTIVE UNDER NORMAL USE. IT IS THE RESPONSIBILITY OF THE PURCHASER TO RETURN THE ENTIRE UNIT TO THE FACTORY, TRANSPORTATION CHARGES PREPAID. THIS WARRANTY DOES NOT COVER PARTS THAT MUST BE REPLACED UNDER NORMAL USE, INCLUDING KNIVES AND DRIVE GEARS ON CAN OPENERS. NO OTHER WARRANTY, WRITTEN OR VERBAL, IS AUTHORIZED BY THE COMPANY. WARRANTY INFORMATION OUTSIDE THE UNITED STATES MAY VARY, CONSULT YOUR DISTRIBUTOR.

04/21



Edlund Company, LLC 319 Queen City Park Road, Burlington, VT 05401, USA  
800-772-2126 www.edlundco.com An ISO 9001: 2015 Company

an Ali Group Company



The Spirit of Excellence